



bite The Fitting & Care of Dentures

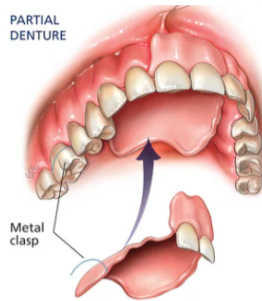
FAMILY DENTISTRY

Millions of people world wide wear dentures. With today's technology, they look more natural and fit better than ever before. For many people, dentures vastly improve their oral health and appearance.

Even at a relatively young age, some people have extensive loss of teeth. When many teeth are lost or extracted, a denture may have to be fitted to maintain normal chewing, bite (occlusion), speech and the appearance of the upper and lower jaws. If present, severe gum disease (called periodontitis) may damage gums and jawbone, leading to tooth loss. If teeth are badly affected by wear, trauma, decay or gum disease, your dentist may suggest an extraction as the best treatment option.

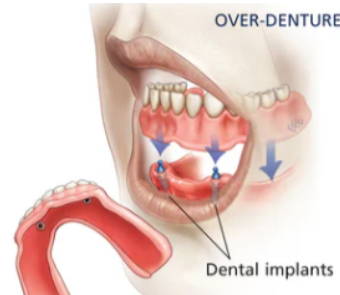
A denture is called a prosthesis, and the fitting of a custom-made denture is called a denture prosthodontics. Dentures are typically a cost-effective solution to the problem of missing teeth.

Materials: Most commonly, dentures are made of acrylic, metal or a combination of metal and acrylic. Some dentures are made of porcelain, flexible nylon or other materials. Each has its own advantages and disadvantages concerning appearance, comfort, durability, weight, and cost. In discussion with you, your dentist can advise you about the best material for you.



A partial denture is made to fill the space left by one or more missing teeth. To hold the partial denture in position, metal clasps are used to secure the denture to nearby teeth.

Flexible nylon partial dentures are often a good option for people who do not want metal or stainless clasps. Precise measurements taken of your jaws, and the occlusion (bite) ensure that the partial denture functions properly with the natural teeth.



An over-denture is a denture that fits:

- by attachments to dental implants, or
- over the top of remaining teeth or,
- over tooth roots that have had root canal treatment.

Remaining teeth or dental implants act as anchors to secure it in place. Over-dentures are modelled in the same way as full dentures. Spaces in the dentures are designed to accommodate the retained teeth.

Full Denture

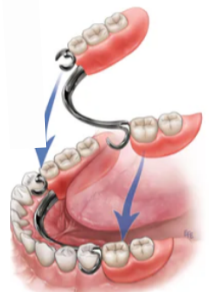
A full denture is fitted when all of the upper or lower teeth, or both are missing.



As well as cosmetic improvements, a full denture provides important structural support that helps maintain the health and strength of the bone that forms the alveolar ridge. Dentures are important in maintaining oral and maxillofacial health and function.

Chrome Dentures

Chrome Dentures have a cast metal framework that is strong, light, well hidden, and non-irritating to oral tissues. They may cost more than acrylic dentures but function better and last longer in most patients. To function their best, chrome dentures are typically used with patients who practice good oral hygiene and have healthy strong teeth.



The design of the clasps keeps the denture firmly in place, minimising up and down movement and irritation to the gums. This also allows greater ability to detect hot foods and liquids, reducing the risk of scalding oral tissues. Chrome is hypoallergenic, that is, it rarely causes an allergic reaction.



Learn more at www.banffdentist.com

